



Elliot Lane

Few homes have a Colonial's statuesque elegance quite like the originals from the late 1700s. Such is the case with this stunning antique nestled on a secluded corner off a private gated lane. As is traditional, it expanded into a series of additions following a New England connected-farmhouse scheme; big house, little house, back house, barn, but the barn in this case is a cupola-topped garage. This exceptional home is then surrounded with luxurious outdoor amenities such as basketball and tennis courts, patio and pool making it ideal for entertaining family and friends.



m i c h e l l e a n d c o m p a n y . c o m



Welcome to Elliot Lane

From its wide plank oak floors and stately entrance to the soaring great room and luxurious pool and patio, exquisite amenities deftly combine old world elegance and contemporary comfort.

The gracious home has a full complement of amenities for entertaining, from its lighted patio and pool with sound systems to its block-lined drive with plenty of room for guest parking. As host, you have a choice of four different entranceways for arrivals – a gated arched trellis welcomes guests directly to the patio serving the pool, tennis and basketball court; a casual and sunny foyer opens into an enclosed breezeway extending from a sunroom off the garage into the great room; a bluestone path leads to both a covered porch entrance off the kitchen and to the original formal front door with dramatic slab granite stoop.





Beamed ceilings and antique paneled walls add ambiance reminiscent of a fine tavern or inn to the formal rooms.

Savor the view of lush lawn and patio from the dining room. Afterwards, enjoy a relaxing cup of coffee in the sitting room with an equally stunning wood paneled wall and similar arch-topped built-in shelves or out to the patio for dessert al fresco where a koi pond and peony garden delight the senses.





A wall of shelves frames the fireplace and extends from floor to the peak of the vaulted ceiling making a grand impression in the bright and sunny great room.

With such a private and pastoral setting, this home turns an appreciative eye to the outside from every corner. A sitting room with two walls of windows extends off the formal living room through a spectacular set of interior French doors. A gracious flow is conducted from the formal dining room, sunroom and kitchen through exterior French doors onto the patios.

A built-in hutch with glass front cabinets creates a charming display case for dishware and a built in banquet provides seating for a sunny eat-in dining area.

A walnut topped island with copper bowl sink takes center stage in a new kitchen that is simply gorgeous and has every amenity a home gourmet could desire. Top of the line appliances include Sub-Zero refrigerator and freezer drawers, Miele ovens and dishwasher, Wolf range and an icemaker that is certain to be appreciated when rooms and patios fill with party guests.



Original hand blown glass panes, wood floors and timbers surround the master suite in grandeur found only in such a remarkable antique.

Sunny windows overlook the quiet corner of the property from the master bedroom.

A custom marble topped vanity is inspired by antique furniture and makes an elegant impression in the master bathroom. Travertine and green marbles are artfully combined into a basket weave pattern on the tile floor. Antique bronze fixtures add an appropriate old world ambiance and radiant heated floors ensure comfort even on the coldest winter morning.





Matures trees and fencing ensure privacy for this spectacular backyard oasis that is certain to appeal to entertainer, nature lover, athlete or gardener.

Water falls from the spa creating a focal point at the center of the natural stone patio surrounding a curvaceous Gunite pool. Enjoy a game of either tennis on the Har-Tru courts or basketball before taking a refreshing dip or simply relax and enjoy being a spectator amidst this incredibly lush surrounding.

With a home that expands from antique to contemporary, original stonewalls blending with expertly crafted hardscaping and the finest outdoor amenities, New England simply doesn't get much better than this.





Style:	Antique colonial farmhouse
Acres:	2.1 +/-
Year Built:	1750
Square Feet:	4,025 +/-
Rooms:	11
Bedrooms:	5
Full Bath:	4
Heating:	Oil/CA
Garage:	3
Sewer & Water:	Septic, City Water
Exterior Features:	Patio, Pool, Grill, Hot Tub, Barn, TC



MICHELLE & COMPANY

Your Life 🏡 Your Home 🏡 Your Realtor

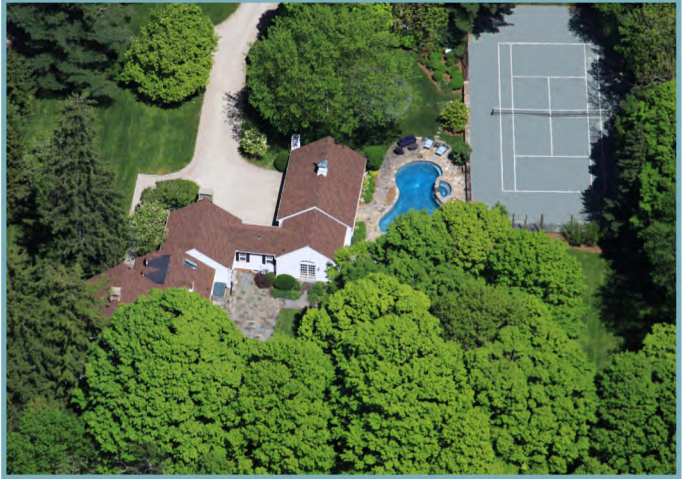
203.454.HOME

michelleandcompany.com

WILLIAM RAVEIS
EXCEPTIONAL PROPERTIES

Elliot Lane

List of Recent Improvements



INTERIOR RENOVATIONS

- Entire house repainted

Kitchen

- Kitchen addition to include a new breakfast area
- Kitchen fully renovated
- New custom cabinets
- Wolf range
- Miele oven
- Sub Zero refrigerator
- Miele dishwasher
- Built-in icemaker
- Custom walnut topped center island

Bathrooms

- Complete renovations of three bathrooms
- Master bath - steam shower
- New electrical and plumbing

EXTERIOR RENOVATIONS

- New roof
- Exterior fully repainted
- Extensive professional landscaping (approx. \$150,000)
- Re-surfaced tennis court
- New fence for tennis court
- Upgraded sprinkler system
- New Jet pump for hot tub

MICHELLE & COMPANY

Your Life 🏠 Your Home 🏠 Your Realtor