



Stonefield

This grand stone Georgian Revival is one of the area's most prominent estates. Nestled into 2.42 pastoral acres, an expansive parcel for the area, it reigns amidst a highly desired enclave of fine homes in the Coleytown area of Westport. Stonefield, a vintage 1934 original was fully renovated and artfully expanded with spacious, sun filled additions. Invite friends to bask by the pool, take in a little shade beneath the loggia, grab a cool popsicle from the ice cream freezer in the kitchen or host a grand soirée in the brilliant great room that captures the splendour of the 30s — it is a home ideal for entertaining in an absolutely fabulous location!

MICHELLE & COMPANY

Your Life 🏡 Your Home 🏡 Your Realtor

203.454.HOME | 203.454.4663

m i c h e l l e a n d c o m p a n y . c o m

WILLIAM RAVEIS
EXCEPTIONAL PROPERTIES

Welcome to Stonefield

An estate with effortless elegance and a lush feeling of luxury throughout.

A truly magnificent home! Stone pavers usher visitors across the property to a stately front entry — a refined Federal style frontispiece in structural stone walls built of fieldstone reclaimed from the site. Once inside, bright and sunny open spaces abound with gracious and contemporary elegance, perfect for entertaining!





An interplay between sturdy stone walls and curvaceous forms enhance this brilliant room with engaging contrasts.

Sunny, resplendent spaces abound, ideally suited to entertaining whether for glamorous dinner parties or more casual affairs by the pool. Curved walls and raised platforms elevate the graceful ambiance, define spaces and add a touch of grandeur to subtle transitions between dining and sitting areas. Recesses in the thick stone walls, originally windows, have been ingeniously repurposed to frame artwork or house bar glasses.





Vintage charm meets fresh appeal and spacious rooms!

The antique rooms are seamlessly integrated into the expanded plan and are just as spacious and inviting. A handsome study showcases the work a fine artisan, Mark Harvey, who crafted its custom inlaid mantelpiece coordinating bookcases as well as a desk. At the center of the home, a spacious kitchen provides ample counter space, storage and industrial appliances for food preparations; serves daily meals at an eat-in banquette; and is convenient to the pool area which is certain to attract numerous summer parties. Having such a spacious kitchen, multiple dining rooms and bonus parking areas result in few constraints to your guest list.





Five grand rooms comprise a most regal master suite.

A sitting area with sunny balconies overlooks the side yard, has built-in media and walls of bookcases. Read, exercise, or watch the news in the sitting area and then turn-in to a serene bedroom completely uncluttered by such distractions.





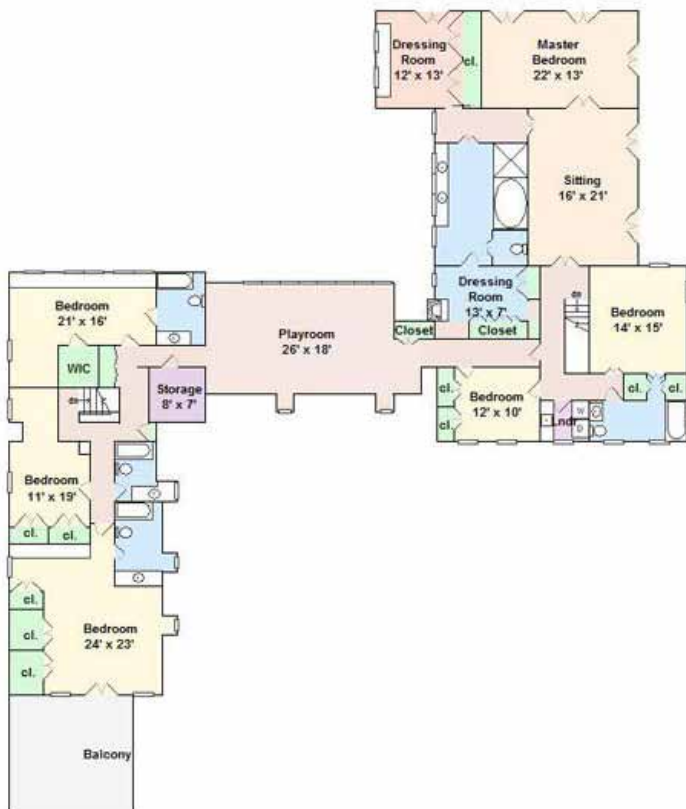
Let luxury completely embrace your lifestyle!

Sunlight filters through tall evergreens and into a surround of three sets of French doors in the bedroom. His and her dressing rooms embrace your daily routine in luxury: his, with rich wood tones and a fireplace, bespeaks Seville Row and hers, with custom bird's-eye maple vanity and wardrobes, recalls the height of Hollywood glamour. Between them is a sparkling master bath fit for royalty with sterling silver fixtures and marble floors, walls and counters.





Invite friends to stay for the weekend; they'll find plenty of room in a masterful guest suite.



Guests enjoy both five-star treatment and supreme privacy in a grand sunny vaulted suite with adjoining private sundeck overlooking the pool. Custom details and artistic touches continue on this level and include a mural hand-painted by Mrs. Fraser in the 1930s on one of the bathtub surrounds. A sitting area with a sunny wall of windows and bench window seat provides a fun gathering space at the center of the second level.





Thoughtfully planned gardens include a conifer garden, an Asian-inspired meditation garden and borders filled with flowering perennials.

This spectacular corner setting is enhanced by the broad canopies of grand old oaks and maples and hand-selected specimens such as smoke trees, red Japanese maples, Blue Atlas cedars, flowering cherries and dogwoods. The dark interior of a gunite swimming pool and spa absorbs the sun's warmth as its surrounding patio paved in pale hand laid Tennessee bricks reflects the sun making it an ideal spot for lounging.





Style:	Colonial
Acres:	2.42+/-
Year Built:	1934
Square Feet:	7,979+/-
Rooms:	15
Bedrooms:	7
Baths:	7 Full/1 Half
Heating:	Oil/CA
Garage:	3
Sewer & Water:	Septic, Well
Exterior Features:	Pool, Hot Tub, Porch, Patio, Balcony



MICHELLE & COMPANY

Your Life 🏡 Your Home 🏡 Your Realtor

203.454.HOME | 203.454.4663

michelleandcompany.com

WILLIAM RAVEIS
EXCEPTIONAL PROPERTIES