



Pier Way

Picture the quintessential waterfront lifestyle....and start living that dream today! Two hundred twenty feet of waterfront with sprawling lawns, a deep water dock, a boathouse, sandy beach and endless views set the stage for this exquisite private gated estate. Seventy two hundred square feet of architecturally designed living space has been artfully orchestrated to embrace the splendor of this incredible setting. Stone, glass, wood and steel have been blended to create dramatic interior spaces and multi-decking that are drenched in sunshine and bask in breathtaking waterviews.

MICHELLE & COMPANY

Your Life 🏡 Your Home 🏡 Your Realtor

203.454.HOME

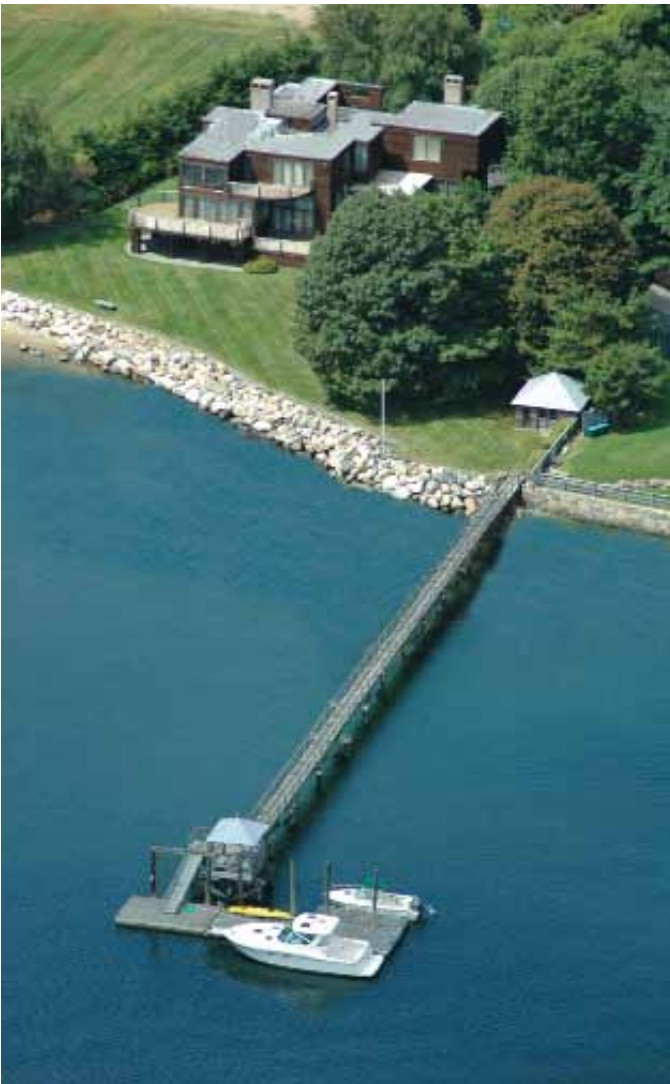
m i c h e l l e a n d c o m p a n y . c o m

WILLIAM RAVEIS
EXCEPTIONAL PROPERTIES

Welcome to Pier Way



The plantings near the front of the house set the tone that this is a home with an appreciation for natural beauty. There are three Bradford pear trees, white flowering in spring, their leaves a beautiful crimson in the fall, a flowering Linden tree that blooms on the Fourth of July, plus an 80-foot-long iris bed and a bluestone bench that complements the natural cedar wood clapboard home's rectangular lines.

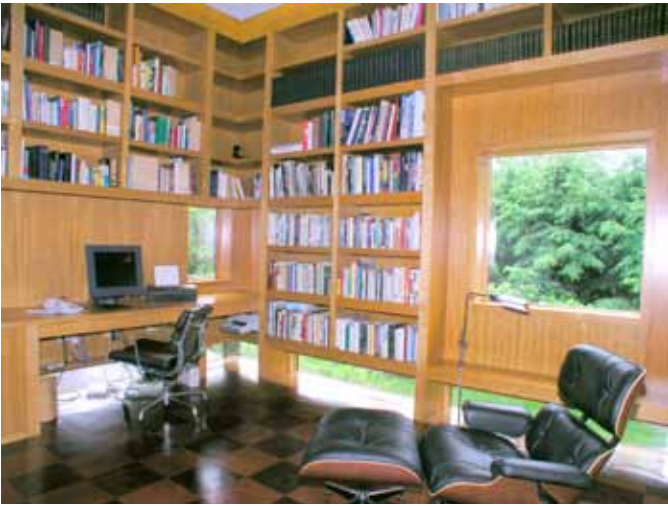


Up the front mahogany deck steps and through the front door, one is greeted by an expansive, 375 square-foot entry gallery with French honed limestone floor. Straight ahead down the hall is an unobstructed and magnificent water view. This gallery is L-shaped with a lovely powder room with limestone floors, clear fir woodwork and matching limestone vanity top and sink.



To the right, the gallery leads to a cozy and private Southern exposure side deck protected from the wind.





To the right of this dramatic entryway is a vaulted, 1,800-volume-capacity library with 16-foot-high ceiling, designed by renowned architect, Roger Ferris. Having won two architectural design awards, it offers floor-to-ceiling matched Anigre wood shelving and a room-length, built-in desk, in addition to built-in benches and generous windows fitted with electric shades. The library, is punctuated by a light and dark leather checkerboard floor to complement antiquarian texts. This unique room also conveys a nautical feel with one-foot-high windows trimming the floor. These windows, especially at night when they are illuminated by recessed lighting, create the impression of being on the water.

Down the marble gallery to the left is a hallway along which one finds a pantry with extensive glass and wood cabinetry for china and glassware, a sink with disposal and a dumbwaiter to bring up groceries from the garage. Up ahead there's a laundry room with a chute from the master bedroom and the guest room.



Leaving this room, the hardwood floor hallway leads into a 324-square-foot, tray ceilinged family room boasting a

red marble fireplace, outside loading wood bin, a wet bar, many built-ins, hardwood floors and again, unobstructed views of the harbor.



East of this room is a grand kitchen with a large breakfast area that not only offers glorious views of the harbor, but leads out to a 28- by 16-foot L-shaped side deck that lovingly embraces the outside and steps up a half-level to front the living room as well. This spacious, light and airy vaulted kitchen features fir cabinets, a custom copper hood

over a gas range, hardwood fir floors throughout, custom hand painted wall tiles depicting local scenes of the Saugatuck harbor, a wood-faced, side-by-side, sub-zero refrigerator, two sinks, two disposals, a center island, seemingly endless counter space, double ovens and myriad other appliances and amenities.



The kitchen flows graciously to the dining room, which is also defined by huge windows and floor-to-ceiling sliding

glass doors to a deck, not to mention a 14-foot-high ceiling, a story and a half tall.



From here, the living space flows up one half level to the 40-foot long living room. On one end, dubbed the winter wing, is a brick fireplace complete with its own dumbwaiter to hoist up cord wood from a small terrace below. The summer section, as expected, overlooks the harbor and is replete with floor to ceiling glass. In short, this is a room for all seasons.



At the end of the living room up one half level brings you to the guest suite on the left, with a large marble-tiled bath. This is the only room that does not have a water view, but instead offers gorgeous scenes of mature landscape plantings.



Leaving the guest suite one crosses an architecturally unique bridge spanning the foyer below. This only heightens the nautical motif. Then, one moves up another half-level to the one-of-a-kind master suite.

What sets this suite apart is the fact that there are not only his and her full, marble-tiled baths, but expansive his and her dressing areas, each comprising about 80 square feet and sporting many built-in drawers and shelving plus a large walk-in closet.



The master bedroom's private balcony is a perfect place to enjoy a romantic glass of wine while watch the sun setting on the Saugatuck and the Sound.

Also on this level are 2 additional bedrooms with water views, large closets and a tiled bathroom with shower and separate toilet room.





And if this were not enough living space, the multipurpose on-grade lower level room, which can be used as a playroom, game room, office or nanny suite with a full bath and queen-size Murphy bed, leads out to a bluestone patio

shaded by the deck above and facing the harbor. This home also features a three-car garage and a workshop area at the basement level plus a large storeroom/wine cellar.



On the water's edge of the property one finds a former gazebo converted into a boathouse with a zinc-coated copper roof and a pointed finial complementing the same peaked detail on the roof of the sitting area at the end of the pier, which has attached to it, 60 feet of floating dock.

And it's important to note that at the water's edge the property is protected by a substantial rip-wrap seawall of boulders that serves as a breakwater. Simply put, this home offers not only the best in waterfront living, but is the ultimate Gold Coast experience.



Style:	Contemporary
Acres:	0.98 w/220' waterfront
Year Built:	1969/2001
Square Feet:	7200 +/-
Rooms:	11
Bedrooms:	5
Full Bath:	5
Half Bath:	1
Heating:	Oil/CA
Garage:	3
Sewer & Water:	Septic, City Water
Exterior Features:	Deep water dock, Beach & Mooring, Gated Entry

MICHELLE & COMPANY

Your Life 🏡 Your Home 🏡 Your Realtor

203.454.HOME

m i c h e l l e a n d c o m p a n y . c o m

WILLIAM RAVEIS
EXCEPTIONAL PROPERTIES