



## Twin Bridge Acre

Nestled among a spectacular surround of mature trees in a bucolic setting on a cul-de-sac, this cherished residence has been lovingly maintained, continuously updated and recently refreshed. It has remained the favorite destination for three generations of birthday parties, receptions, Thanksgiving feasts and many other fondly celebrated milestones. The home is conveniently located and with an open floor plan, level lawns, porch, patio, deck and pool — special events seem to invite themselves to this idyllic location.

MICHELLE & COMPANY

Your Life 🏡 Your Home 🏡 Your Realtor

203.454.HOME | 203.454.4663

[michelleandcompany.com](http://michelleandcompany.com)

  
WILLIAM RAVEIS  
EXCEPTIONAL PROPERTIES

# Welcome to Twin Bridge Acre

*An American beauty in a quintessential  
New England landscape as cozy and  
comforting as homemade apple pie.*

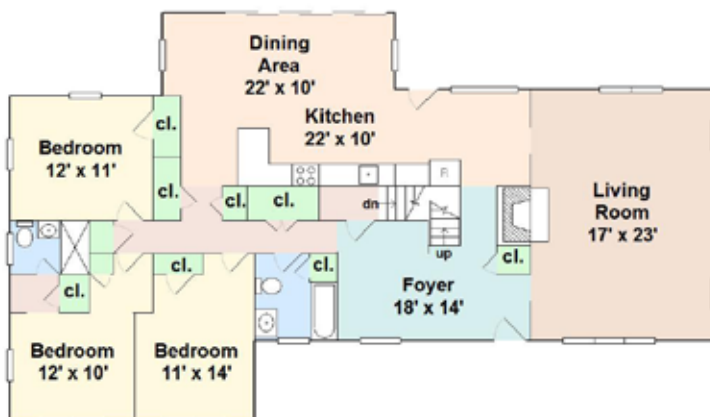
Setback on a quiet street, the road gently curves and leads you in a sweeping arc past the home before turning into the driveway. This provides not only a graceful approach but also an opportunity to appreciate the gardens that surround the house in year-round color. The front porch provides a relaxing perch to enjoy the display of the seasons, such as the ornamental weeping cherry whose graceful boughs sway in the wind beside the front walkway. Beautiful year round, it is at its show-stopping peak in May. Heavily laden with blossoms, it soon scatters its pink petals into the breeze and across the lush level lawn.





*With both traditional formal rooms and a contemporary emphasis on openness to the surrounding outdoor setting, this Cape enjoys many possibilities for entertaining.*

An open two-story stair with skylight welcomes a shaft of sunlight into a spacious foyer with plenty of room to double as a small sitting room or home office. In the living room, wide bead board paneling surrounds a handsome custom mantel. Built-in shelves flank double hung windows that have louvered shutters that both add to the charming atmosphere and provides additional privacy.





*Embracing the stunning outdoor setting at every opportunity, three sets of sliding doors extend eat-in dining seamlessly onto the sun dappled back deck.*

Updated to include many desirable features such as professional appliances, all white cabinets, granite counters and bead board wainscoting, the kitchen offers the warm welcome of a country kitchen with plenty of modern upgrades. Pull up a stool to chat with the chef or enjoy a cup of coffee while reading the morning paper at the counter. Or throw open the sliding doors and grill outside on the deck.





*In addition to a traditional arrangement of bedrooms on the main level, there is also a spacious master suite that encompasses the entire second floor.*

Delightful nooks such as a small stair landing and window seat provide distinctly cozy corners in an otherwise open plan. A wide picture window is flanked by double-hung sashes that frame the view over the lush back garden. Outside the master bath, a linen closet keeps fresh towels conveniently at hand as you head to the walk-in shower.





*Admire your private sanctuary from the back deck or strike up the grill to serve bathers relaxing on the mahogany pool surround.*

This lush pastoral setting is comfortably situated on a neighborhood street and also enjoys supreme privacy behind its surround of mature trees. With a wealth of different specimens and colorful perennials, the landscape shows a lifetime of thoughtful planning, loving care, growth and attention.





Style:	Cape
Acres:	1.01+/-
Year Built:	1950
Square Feet:	2,497+/-
Rooms:	7
Bedrooms:	4
Full Baths:	4
Heating:	Oil/CA
Garage:	2
Sewer & Water:	Septic/ Well
Exterior Features:	In ground Pool, Deck,Porch, Lighting
Taxes:	\$11,611



MICHELLE & COMPANY

Your Life 🏡 Your Home 🏡 Your Realtor

203.454.HOME | 203.454.4663

[michelleandcompany.com](http://michelleandcompany.com)

WILLIAM RAVEIS  
EXCEPTIONAL PROPERTIES